

# The rules of composting

**1** Install the composter in a **shady spot**, close to the house and on the ground

**2** **Balancing** inputs

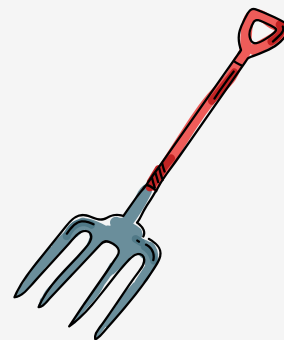
**50% wet waste**  
(also called “nitrogenous”)

**50% dry waste**  
(also called “carbonaceous”)

**3** **Aerate** by stirring regularly

**4** **Monitor** humidity

- If too dry, water and/or add wet waste
- If too wet, aerate and add dry ‘structuring’ waste such as shredded material



# To compost

Wet waste (nitrogenous)	Dry waste (carbonaceous)
<ul style="list-style-type: none"> <li>Fruit and vegetable peelings (<i>even citrus fruit</i>)</li> <li>Coffee grounds + filters, tea bags</li> <li>Egg shells</li> <li>Leftovers (<i>no meat</i>)</li> <li>Dried bread</li> </ul>	<ul style="list-style-type: none"> <li>Cartons (brown and packaging), <i>without tape or labels</i></li> <li>Egg cartons</li> <li>Paper towel rolls</li> <li>Newspapers</li> </ul>
<ul style="list-style-type: none"> <li>Lawn clippings (in small quantities)</li> <li>Faded plants and flowers</li> </ul>	<ul style="list-style-type: none"> <li>Dead leaves</li> <li>Branches</li> <li>Shredding</li> <li>Pruning</li> </ul>

# Do not compost

Meat, fish, bones, shellfish ; Animal litter ; Wood or coal ash ; Vacuum cleaner contents ; Diseased plants ; Plastic packaging of plant origin



Average composting time : 9 months

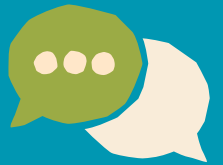
Appearance of mature compost :

- Waste not recognisable
- Brown colour
- Crumbly/crumbly
- Undergrowth smell
- Virtually no decomposers

Use :

- On the surface or mixed into the top 5 cm of soil / as a soil improver
- Covered with green waste mulch

## Useful information



Composting contact details : Cynthia ROULIN

Telephone : 02.43.08.12.71 / 06.35.30.24.73

Mail : [anim.devdurable@bocage-mayennais.fr](mailto:anim.devdurable@bocage-mayennais.fr)



Facebook discussion group for Nord Mayenne

See also the ADEME guides on composting and mulching